



LA MAGDALENA

ARBOLES DE TRANSMISION A CARDAN
P.T.O. DRIVE SHAFTS · ARBRES A CARDAN · GELENKWELLEN



TMplus



TMplus range

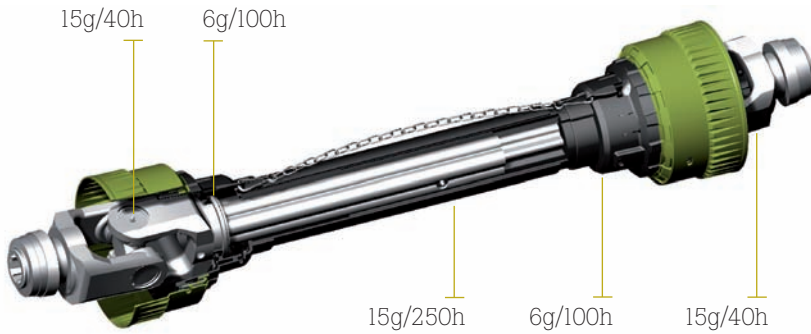
The PTO Shafts in the TMplus range are designed to satisfy the demanding requirements and extreme conditions of the professional market.

Seasonal lubrication and easy access to the greasing points reduce maintenance, thus providing the convenience that every professional needs.

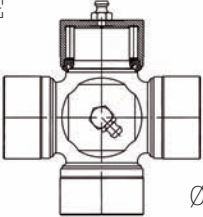
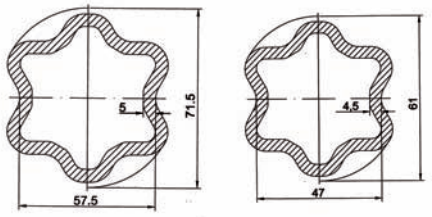
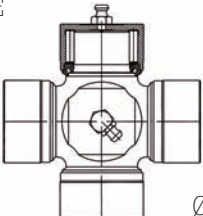
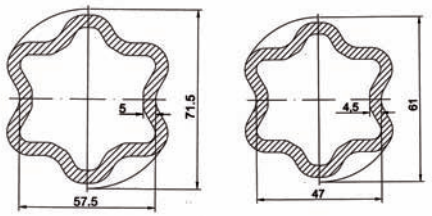
The intense search for adequate materials for each component has resulted in this range, where its main features are robustness and durability.



GREASING POINTS



300 PLUS SERIES

3011	2242E  Ø42X104	R6  R5C
3012	2250E  Ø50X118	R6  R5C

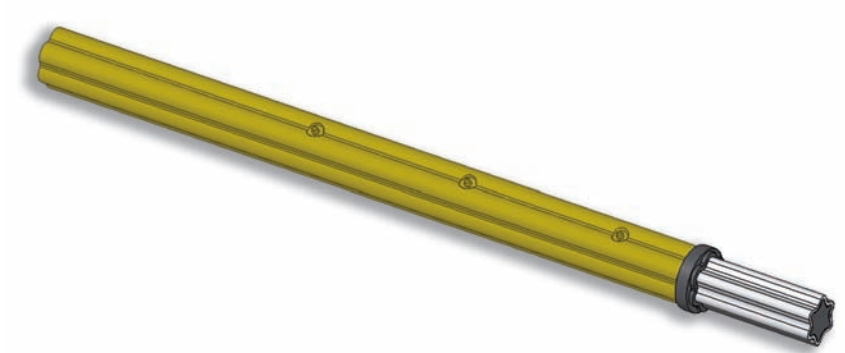
Power and torque specifications

Model	Maximum dynamic values		1000 hours work operating at 5°		100 hours work operating at 10°	
			540 rpm	1000 rpm	540 rpm	1000 rpm
	Nm	in.lb	<i>P kw (HP) / Mn Nm (inlb)</i>	<i>P kw (HP) / Mn Nm (inlb)</i>	<i>P kw (HP) / Mn Nm (inlb)</i>	<i>P kw (HP) / Mn Nm (inlb)</i>
11	3910	34600	79 (107) / 1400 (12390)	122 (166) / 1165 (10310)	125 (120) / 2215 (19605)	193 (263) / 1840 (16285)
12	5670	50180	119 (162) / 2095 (18540)	182 (248) / 1740 (15400)	188 (256) / 3320 (29380)	289 (393) / 2760 (24420)

TELESCOPIC TUBES

The telescopic system consists of a 71,5 mm outer tube and an 61 mm treated inner tube to reduce the wearing between them.

As a novelty, a grease chamber inside the tubes lubricates them without any need of manipulation and extending the greasing intervals to 50-250 hours.



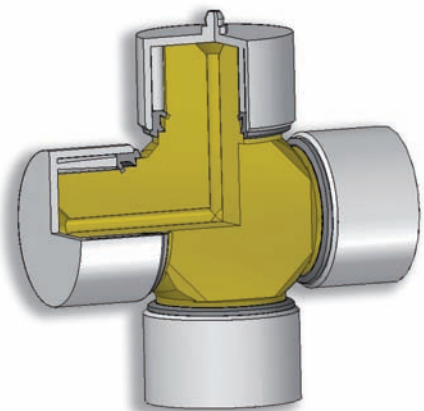
Transmission torques of the tubes:

	R5C	R6	Par	inlb
3011	x	x	6000Nm	53100
3012	x	x	6000Nm	53100

UNIVERSAL JOINT

A new triple lip seal on the cross caps provides better protection to the needle bearings against external agents and increases its greasing interval from 50 to 250 hours depending on working conditions.

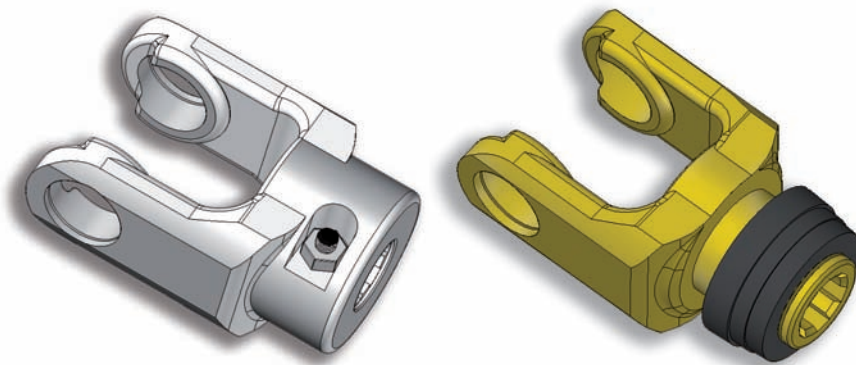
Meanwhile, a study of the materials and dimensions has been carried out to make the crosshead more robust.



OUTER YOKE

The TMplus yokes are extremely robust and sturdy to suffer minimum deformations when under load.

Special attention has been put to critical areas on the yokes to achieve a better performance and longer life cycle.



The TMplus range has two types of connections for the power take-off.

Slide collar lock: this is a solid locking system, recommended for all types of applications. Its most important feature is its easy assembly and disassembly thanks to its automatic engagement system.

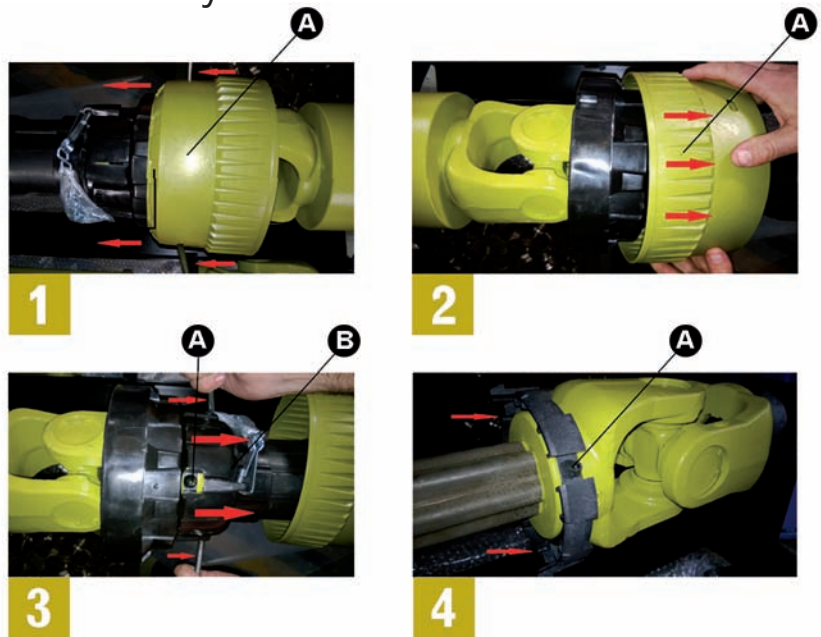
Tapered conical bolt: strong, precise and highly traction-resistant attachment system, it requires a tool for its assembling and disassembling.

Recommended for very demanding applications.

		1 3/8 z6	1 3/8 z21	1 3/4 z6	1 3/4 z20	32x38x6 z8
3011	Slide collar lock	•	•	•	•	•
	Tapered conical bolt	•	•	•	•	•
3012	Slide collar lock	•	•	•	•	•
	Tapered conical bolt	•	•	•	•	•

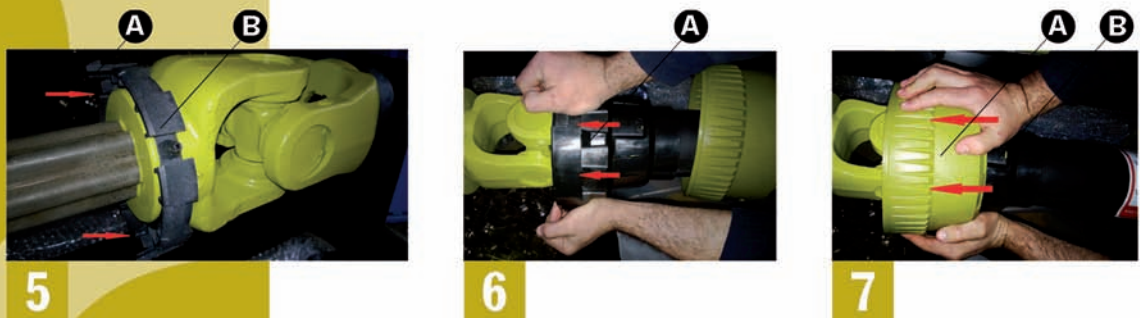
ASSEMBLING AND DISASSEMBLING OF THE SAFETY GUARD

Disassembly



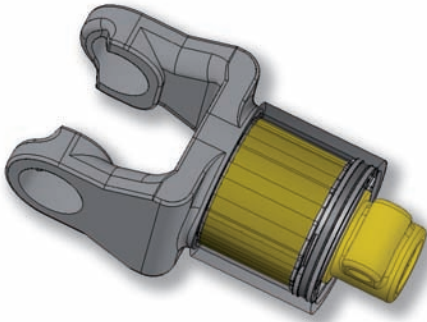
- Push simultaneously both locking flaps on the sealing ring making use of a tool (1.A) (eg. screwdriver) to remove the protector cover (2.A).
- Slightly tap the inner cone–pulling it backward will reveal the sliding ring (3.A, 3.B) which remained on the yoke’s groove (4.A).

Assembly



- The inner cone needs to be aligned with the guard’s tube (5.A) so that the sliding ring’s coupling fits into the slot (6.A), then push it until the inner cone is safely attached to the ring.
- Straighten the protector cover (7.B) so that the slot (7.A) is aligned with the locking flaps. Make sure that the chain is hanging loose outside the guard.

OVERRUNNING CLUTCH



The overrunning clutch transmits the power in rotation in the preset direction and is used to eliminate torque peaks generated by the inertia of the machine.

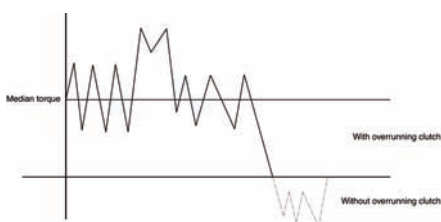
TMplus range

The overrunning clutch on the TMPLUS range features horizontally laying pawls which smoothen dramatic slips and a new greasing system that increases the greasing intervals and isolates the interior from external agents.

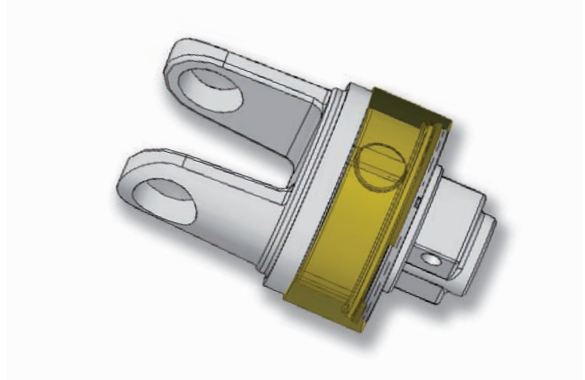
Model 95N

Equipped with optimal centering, as it is supported by a bearing, it guarantees its longevity transmitting high torque.

Performance graph of the overrunning clutch



CAM TYPE CUT-OUT CLUTCH



The cam type cut-out clutch blocks the power flow when torque dramatically increases.

Once the rotation speed drops, the cam type cut-out clutch will reassemble fully restoring the power flow.

TMplus range

The cam type cut-out clutch is available on the whole TMplus range.

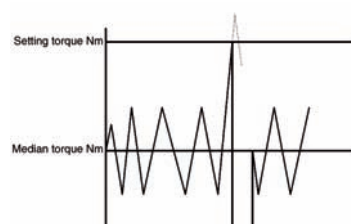
Model 98

The cut out clutch should be calibrated at a rate of 1,5 to 2 times the average transmitted torque.

3011---> 2100 - 2800 Nm

3012---> 3100 - 4190 Nm

Performance graph 98





LA MAGDALENA



Arzubia kalea, 8
48220 ABADIÑO - BIZKAIA (Spain)

Tlf: +34 946 201 404
Fax +34 946 201 271
export@lamagdalen.com

